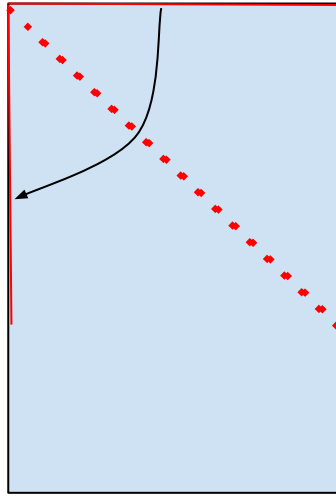


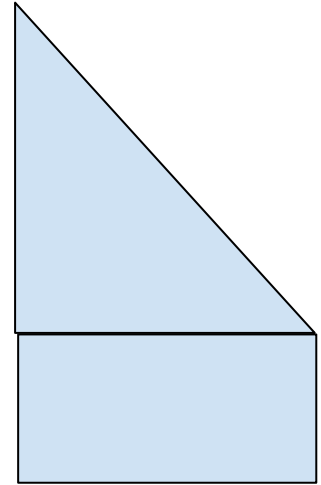
Making Rectangular Paper into a Square



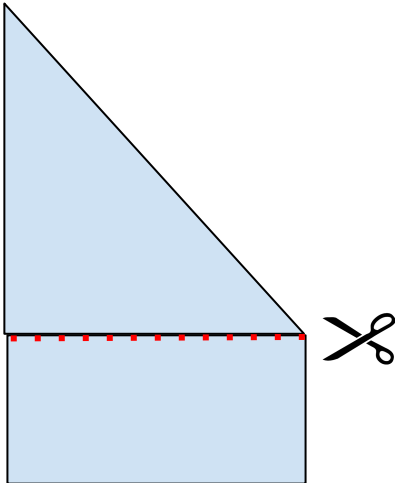
Step 1: Hold the rectangular paper so that it's in a portrait orientation.



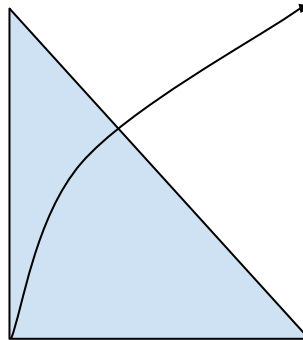
Step 2: Make the top edge touch the top left edge of the paper and crease on the diagonal line (shown red, dotted).



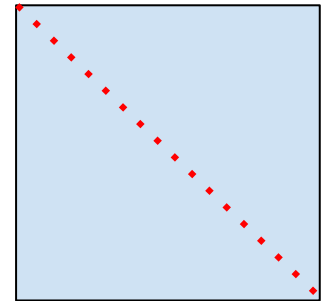
End of Step 2:
This should be the resulting shape.



Step 3: Cut along the red line so it looks like a triangle.



Step 4: Open up the triangle so that it looks like a square.



Step 5: This should be the resulting shape. Many of the origami objects we are making require a diagonal fold so it's fine to have it!